

TSA



+ *S. epidermidis* , + *Staphylococcus aureus*

MSA



+ *S. epidermidis* , + *Staphylococcus aureus*

MAC



- *Enterobacter aerogenes* , - *Proteus vulgaris*

PEA



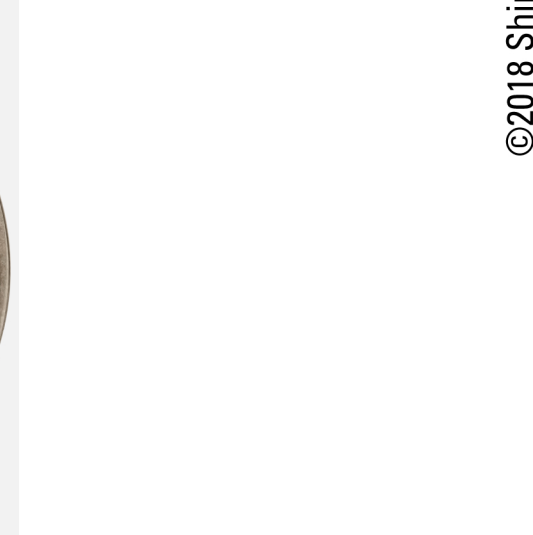
+ *S. epidermidis* , + *Staphylococcus aureus*

EMB



+ *S. epidermidis* , + *Staphylococcus aureus*

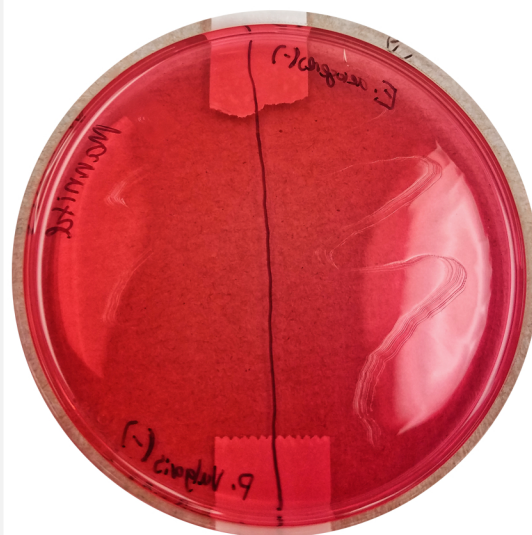
BDA



+ *S. epidermidis* , + *Staphylococcus aureus*



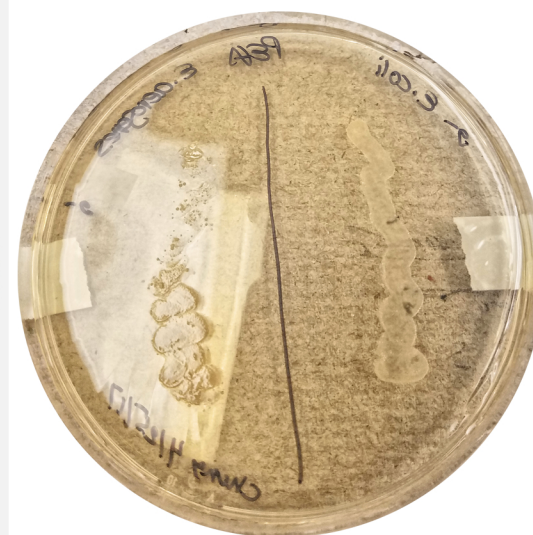
- *Enterobacter aerogenes* , - *Escherichia coli*



- *Proteus vulgaris* , - *Enterobacter aerogenes*



- *Escherichia coli* , + *Bacillus cereus*



- *Enterobacter aerogenes* , - *Escherichia coli*



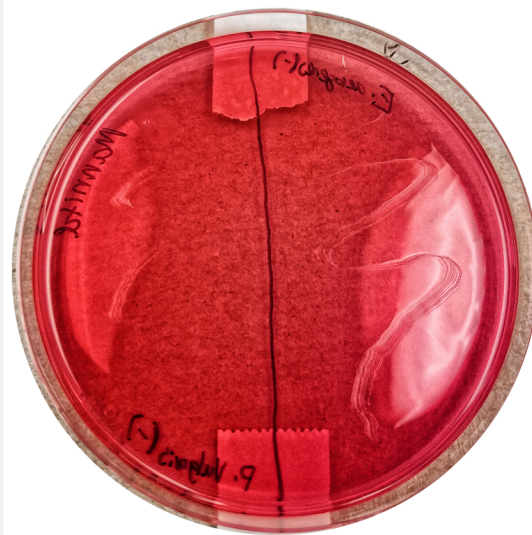
- *Proteus vulgaris* , - *Enterobacter aerogenes*



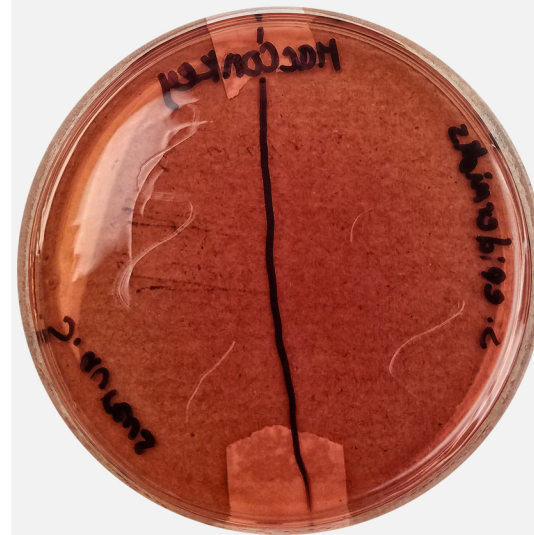
+ *Staphylococcus aureus* , + *Bacillus cereus*
+ *S. epidermidis*



- *Proteus vulgaris* , + *Bacillus cereus*



- *Escherichia coli* , + *Bacillus cereus*



+ *S. epidermidis* , + *Staphylococcus aureus*



- *Proteus vulgaris* , + *Bacillus cereus*



+ *Bacillus cereus* , - *Escherichia coli*



- *Escherichia coli* , - *Proteus vulgaris*
- *Enterobacter aerogenes*